



SPANK

DESIGN • MANUFACTURE • RIDE



DESIGN • MANUFACTURE • RIDE

PROPRIETARY DESIGN
VERTICALLY INTEGRATED IN HOUSE MANUFACTURING
NON-CORPORATE & AFTER MARKET FOCUSED

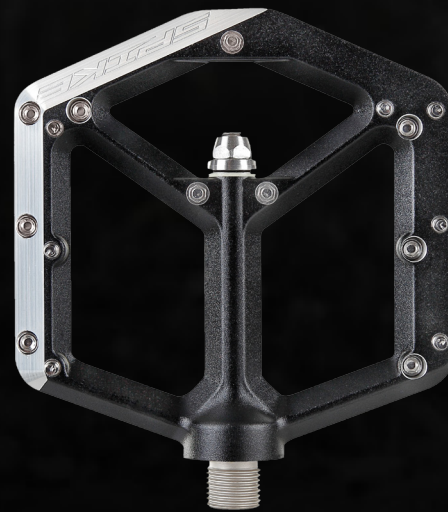
SPANK

DESIGN • MANUFACTURE • RIDE

RACE • FREERIDE

SPANK

WEIGHT OPTIMIZED COMPETITION GRAVITY GEAR.



SPANK

DESIGN • MANUFACTURE • RIDE

TRAIL

0024

THE PERFECT ALL MOUNTAIN OR TRAIL SOLUTION.
STRENGTH & STIFFNESS AT XC WEIGHTS.



SPANK

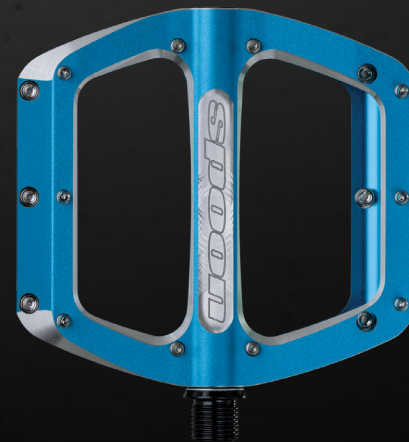
DESIGN • MANUFACTURE • RIDE



ECONOMIC ADULTS & KIDS

SPANK

BOMBPROOF GRAVITY GEAR - PRICED RIGHT!



SPANK

DESIGN • MANUFACTURE • RIDE

2016 PRODUCT UPDATES & ADDITIONS

NEW HUBS

NEW RIMS AND WHEELS

UPGRADES TO SPIKE & OOZY PEDALS + NEW SPOON PEDALS

KIDS LINE

TUBELESS TAPE & VALVES

SPANK

DESIGN • MANUFACTURE • RIDE

HUBS

ALL NEW SPIKE DH AND OOZY TRAIL HUB SYSTEMS



SPIKE

DH • FREERIDE



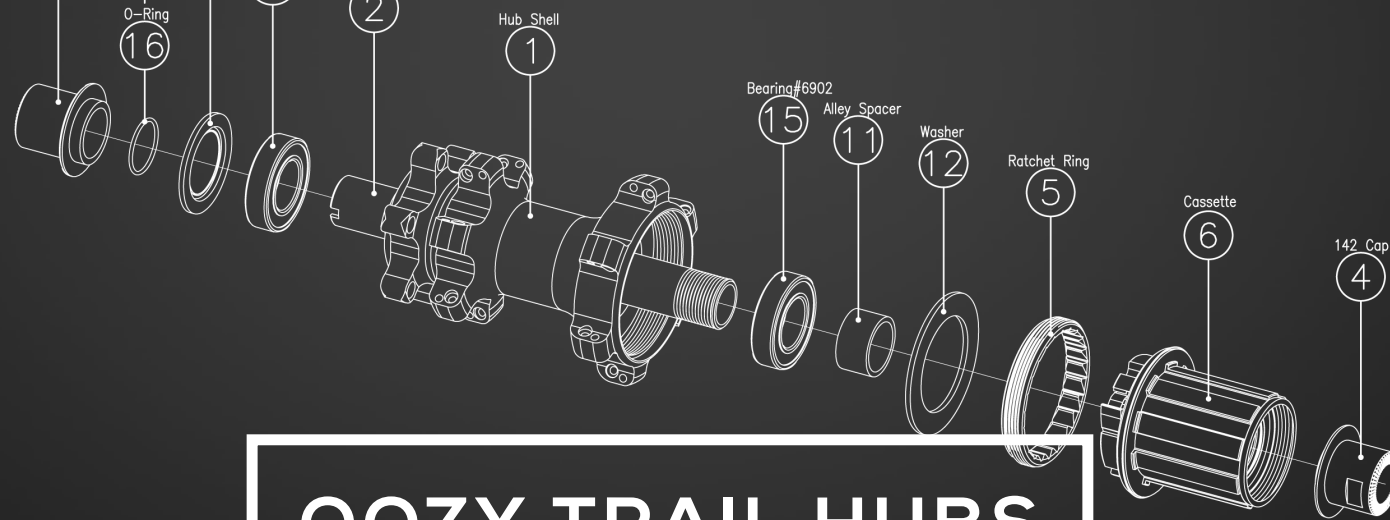
OOZY

ALL MOUNTAIN • TRAIL • ENDURO

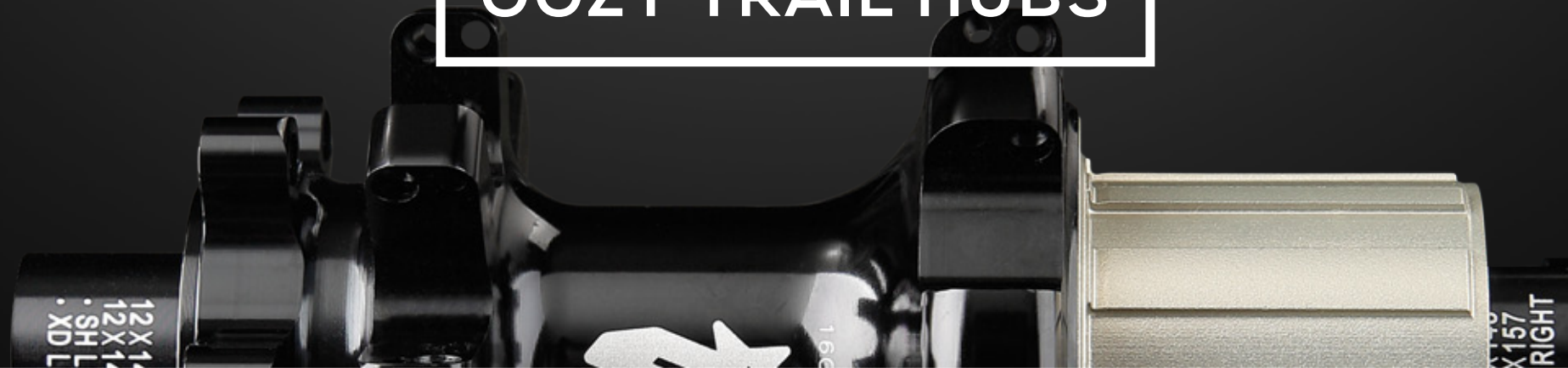
LIGHTER, STRONGER, INCREASED ENGAGEMENT, STREAMLINED ADAPTER
AND SERVICE PART PROGRAM.

SPANK

DESIGN • MANUFACTURE • RIDE



OOZY TRAIL HUBS



- + 32H STRAIGHTPULL DESIGN
- + 15mm FRONT - 142mm REAR
- + OVERSIZED SLS (SINGLE SPOKE LENGTH) FLANGES
- + IMPROVED SPOKE TORQUE RETENTION AND WHEEL STIFFNESS
- + INCREASED COMPATIBILITY AND CUSTOMIZATION

SPANK

DESIGN • MANUFACTURE • RIDE



SPIKE HUBS

- + 15/20mm FRONT - 135mm OR 150mm REAR
- + 32H J-HOOK DESIGN
- + REDUCED WEIGHT AND INCREASED ENGAGEMENT
- + IMPROVED DURABILITY AND EASE OF SERVICE
- + INCREASED COMPATIBILITY AND CUSTOMIZATION

SPANK

DESIGN • MANUFACTURE • RIDE

HUBS



SPiKE
J-HOOK

0024
STRAIGHT PULL

REAR HUBS & ADAPTORS							FRONT HUBS & ADAPTORS				FREEHUBS	
OR	10x135	12x135	12x142	BOOST	12x150	12x157	OR	15x100	20x110	BOOST	Alloy SH/XD	Steel SH/XD
●	●	●	●		●	●	●	●	●	●	●	●
●	●	●	●	●			●	●	●	●	●	●

SERVICE ALL HUB STANDARDS ACROSS MTB DISCIPLINES.

SPANK

DESIGN • MANUFACTURE • RIDE



Fratelli
Industries

SPANK'S INHOUSE RIM & PEDAL MANUFACTURING FACILITY.
INDUSTRY LEADING CONTROLS & TOLERANCES.

SPANK

DESIGN • MANUFACTURE • RIDE

RIM TECHNOLOGY

ELONGATION



YIELD STRENGTH



TENSILE STRENGTH



REDUCED WEIGHT
WITH ENHANCED
STRENGTH AND
STIFFNESS.

DYNAMAL ALLOY IS USED IN
ALL SPANK RIMS WITH THE
EXCEPTION OF TWEET & SPOON.

DYNAMAL
ALLOY

SPANK

DESIGN • MANUFACTURE • RIDE

RIM TECHNOLOGY



OohBah[™]
Reverse Well Design

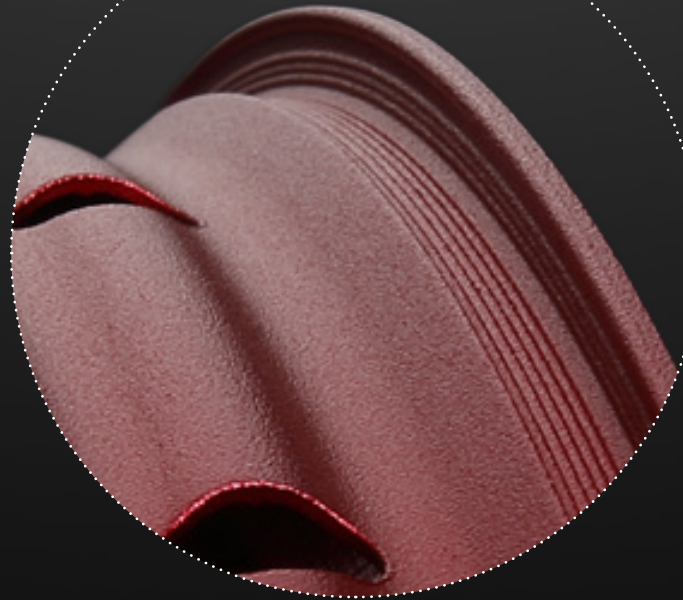
PATENTED PERFORMANCE ENHANCING DESIGN:

- + HIGHER STRENGTH TO WEIGHT RATIO
- + EASE OF TUBELESS APPLICATION
- + WIDER RIMS AT LOWER WEIGHTS
- + UNPARALLED TIRE RETENTION

SPANK

DESIGN • MANUFACTURE • RIDE

RIM TECHNOLOGY



Bead Bite™
AntiBurp Tubeless

- + RIDGED BEAD HOOKS REDUCE PINCH FLATS & BURPS
- + CREATES AIR SEALS BETWEEN TIRE & RIM
- + INCREASED FRICTIONAL FORCES TRAP TIRE BEADS IN PLACE
- + 2nd GENERATION DESIGN IMPROVES EASE OF MOUNTING AND INFLATION
- + WIDER BEAD SHELF ACCOMMODATES HIGH VOLUME TIRES

SPANK

DESIGN • MANUFACTURE • RIDE



HAND BUILT

AUTHENTIC HAND LACED AND TRUED WHEELSETS.

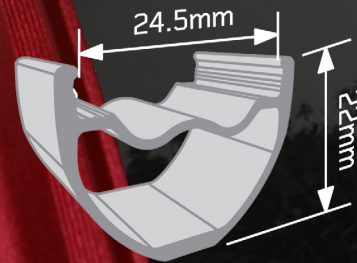
SPANK

DESIGN • MANUFACTURE • RIDE

TRAIL RIMS

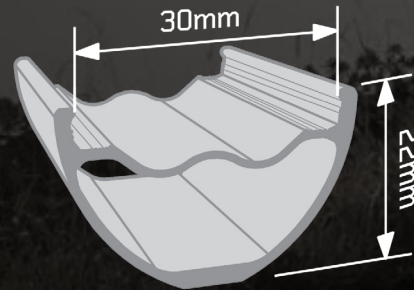


OOZY TRAIL 295
Bead Bite™



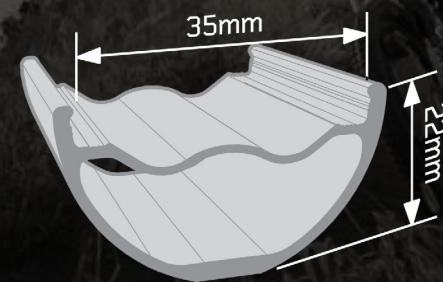
- 26" 425g±
- 27.5" 445g±
- 29" 475g±
- 28H & 32H

OOZY TRAIL 345
Bead Bite™



- 27.5" 480g±
- 29" 520g±
- 32H

OOZY TRAIL 395+
Bead Bite™



- 27.5" 540g±
- 29" 580g±
- 32H

OOZY

SPANK

DESIGN • MANUFACTURE • RIDE

- NEW FOR 2016 -

TRAIL WHEELSETS

OOZY TRAIL 295

WEIGHT (F/R) : 1670g (26") / 1700g (27.5") / 1800g (29")

- + ULTRALITE WIDE TRAIL RIMS AND WHEELS
- + 28H STRAIGHTPULL CONFIGURATION
- + COMPATIBLE WITH NEW OOZY AND SPIKE HUB PARTS
- + TUBELESS READY - BEAD BITE TUBELESS RIM HOOKS

OOZY TRAIL 345

32H - WEIGHT (F/R) : 1920g (27.5") / 1980g (29")

- + LIGHTWEIGHT WIDE TRAIL RIMS AND WHEELS
- + NEW 32H STRAIGHTPULL CONFIGURATION
- + HIGHLY COMPATIBLE WITH WIDE RANGE OF TIRES
- + TUBELESS "EQUIPPED" - BEAD BITE TUBELESS RIM HOOKS

OOZY TRAIL 395+

32H - WEIGHT (F/R) : 2030g (27.5") / 2100g (29")

- + PLUS SIZE CROSS OVER TRAIL WHEELS
- + NEW 32H STRAIGHTPULL CONFIGURATION
- + OPTIMIZED FOR BOTH HIGH VOLUME AND PLUS SIZE TIRES
- + TUBELESS "EQUIPPED" - BEAD BITE TUBELESS RIM HOOKS



TUBELESS EQUIPPED (VALVE & TAPE INCL) • 20mm FRONT AND QR REAR ADAPTERS INCL
2 SPARE SPOKES INCL. • BOOST OPTIONS AVAILABLE (TRAIL 345 & TRAIL 395+)

OOZY

SPANK

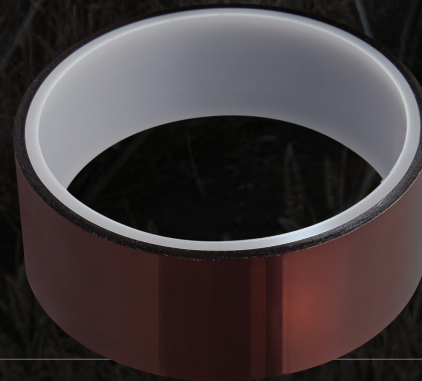
DESIGN • MANUFACTURE • RIDE

TRAIL WHEELSETS

OOZY TRAIL 345 AND 395+ WHEELSETS ARE TUBELESS EQUIPPED WITH VALVES AND FRATELLI TAPE

TUBELESS READY VALVES

- + 51mm LENGTH
- + IMPROVED RUBBER BASE



30mm FRATELLI TAPE

- + OPTIMIZED FOR USE WITH RIMS 30mm WIDTH AND UP
- + ULTR LIGHT / WIDE TEMPERATURE RANGE

OOZY

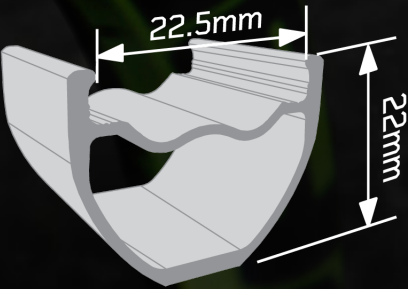
SPANK

DESIGN • MANUFACTURE • RIDE

DH RACE RIMS

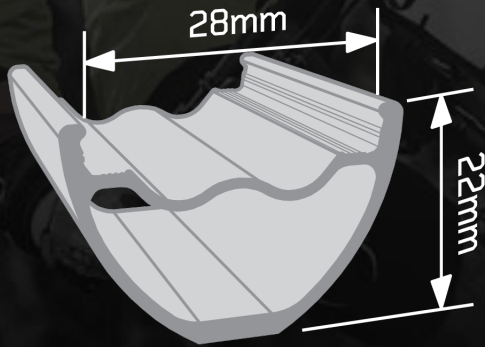


SPIKE RACE 28
Bead Bite™



26" 480g±
27.5" 490g±
32H

SPIKE RACE 33
Bead Bite™



26" 480g±
27.5" 500g±
32H

SPANK

SPANK

DESIGN • MANUFACTURE • RIDE

- NEW FOR 2016 -

DH RACE WHEELSETS

SPIKE RACE 33 BEAD BITE

32H - WEIGHT (F/R) : 1950-2050g (26") / 2050-2150g (27.5")

- + ALL NEW WIDER LIGHTWEIGHT DH RACE WHEELS
- + NEW 32H SPIKE HUB J-HOOK CONFIGURATION
- + ADDED TRACTION, IMPROVED TUBELESS PERFORMANCE
- + TUBELESS READY - BEAD BITE TUBELESS RIM HOOKS

SPIKE RACE 28 BEAD BITE

32H - WEIGHT (F/R) : 1950-2050g (26") / 2050-2150g (27.5")

- + SPANK'S LEGENDARY WC DH RACE WHEELS
- + NEW 32H SPIKE HUB J-HOOK CONFIGURATION
- + SLIM PROFILE - SPEED AND PREDICTABILITY
- + TUBELESS READY - BEAD BITE TUBELESS RIM HOOKS



TUBELESS READY • 15mm FRONT INCL (135mm ONLY)

SPANK

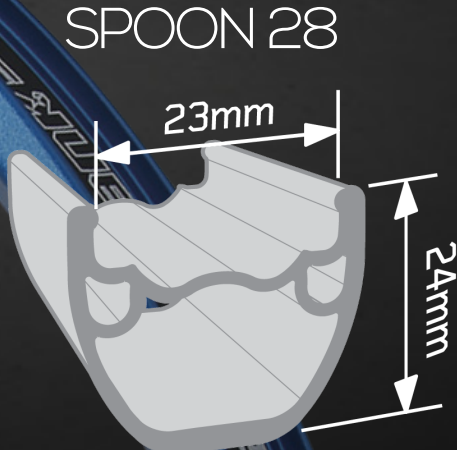
SPANK

DESIGN • MANUFACTURE • RIDE

ECONOMIC ADULTS & KIDS



20"
32H 340g±



24"
32H 498g±



26"
27.5"
32H 620g±
650g±

SPOON

SPANK

DESIGN • MANUFACTURE • RIDE

- NEW FOR 2016 -

KIDS WHEELSETS

SPOON 28 - 20"

32H - WEIGHT (F/R) : 1550g (506 x 23mm)

SPOON 28 - 24"

32H - WEIGHT (F/R) : 1880g (507 x 22.9mm)

- + LIGHT WEIGHT UPGRADE WHEELS FOR KIDS
- + HYBRID LIGHTWEIGHT SPIKE HUB SYSTEM
- + OPTIMIZED FOR WIDE RANGE OF 20"/24" TIRES
- + COMPATIBLE WITH NEW OOZY AND SPIKE HUB PARTS



SPOON 32 26" AND 27,5" NOW BUILT WITH NEW SPIKE HUBS.

SPOON

SPANK

DESIGN • MANUFACTURE • RIDE

TEAM EDITION RIMS



26" & 27,5" REMI THIRION • DANNY MACSKILL 24"

SPANK

SPANK

DESIGN • MANUFACTURE • RIDE

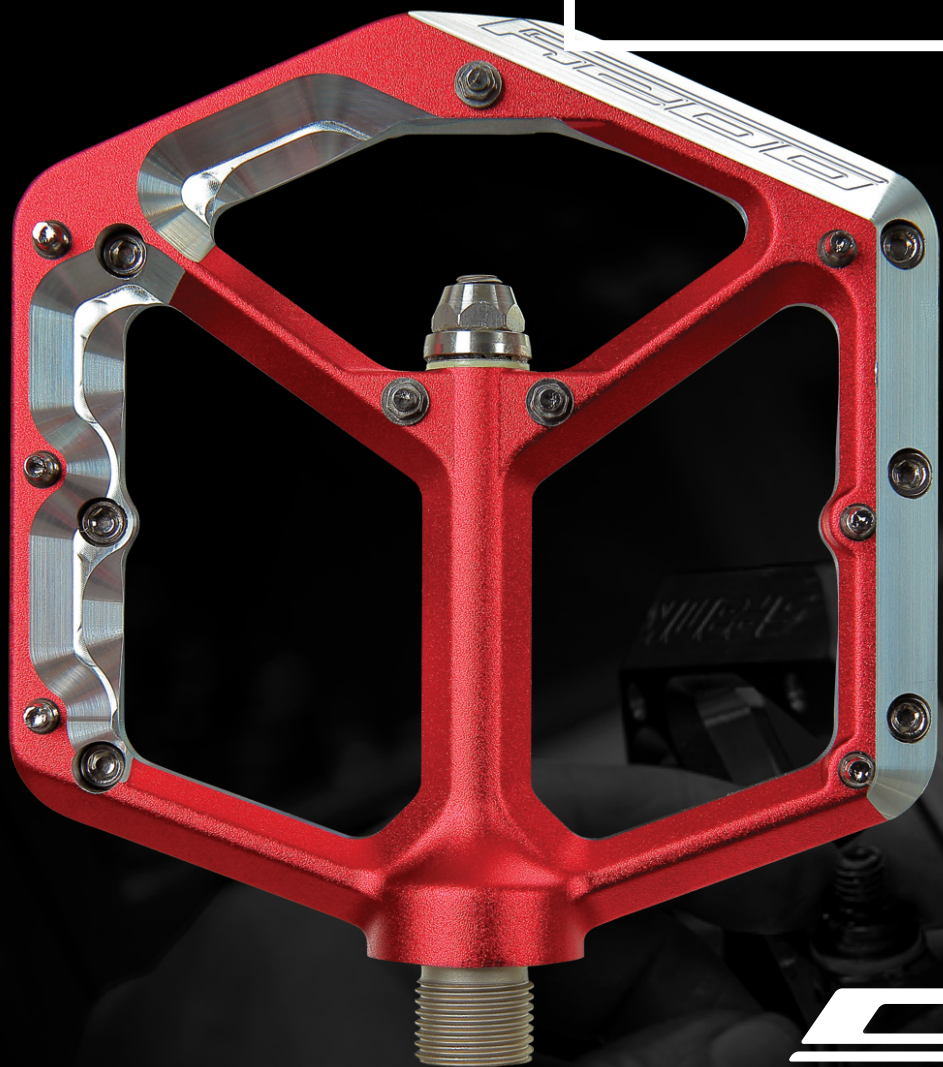
- INCREASED PRODUCTION CAPABILITIES -

IN-HOUSE PEDAL PRODUCTION

SPANK

DESIGN • MANUFACTURE • RIDE

IMPROVED OOZY TRAIL PEDALS



- + NEW HOLLOW FORGED SCANDIUM-CHROMOLY AXLES
- + NEW SILICON FRICTION SEAL SYSTEM
- + NEW FINISH LINE (TM) TEFLON BEARING LUBRICANT
- + NEW CNC LOGOS
- + IMPROVED PIN DESIGN AND CONFIGURATION
- + IN-HOUSE PRODUCTION = REDUCED PRICE!

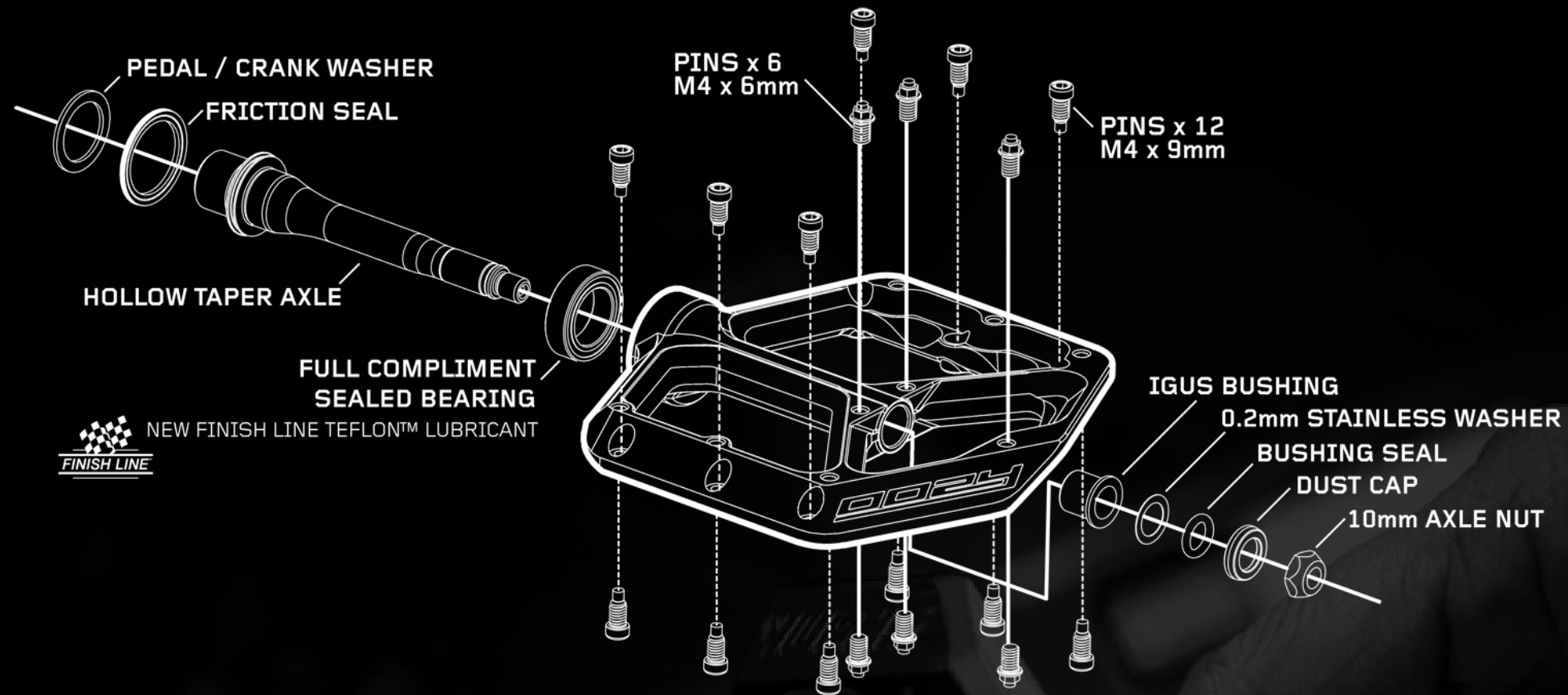


OOZY

SPANK

DESIGN • MANUFACTURE • RIDE

OOZY PEDAL CONSTRUCTION



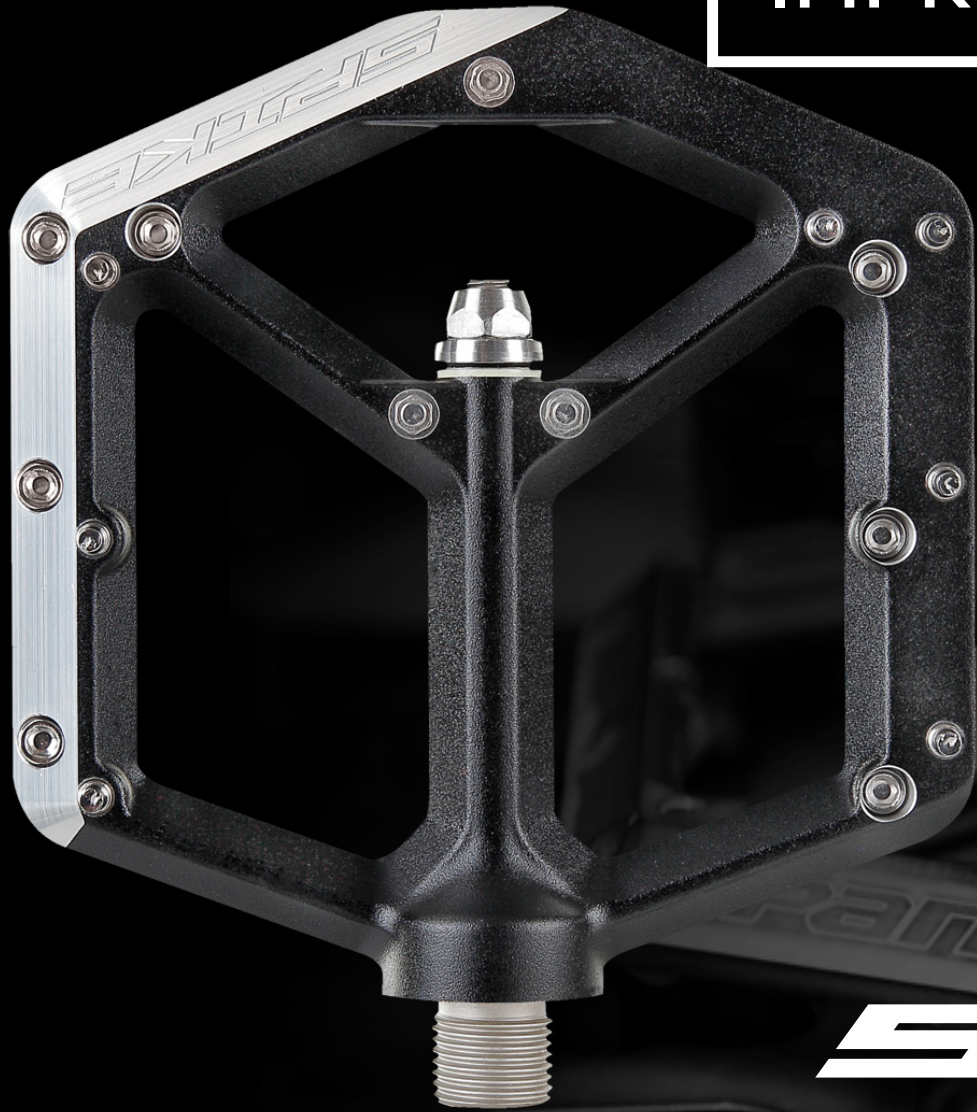
OOZY

SPANK

DESIGN • MANUFACTURE • RIDE

IMPROVED SPIKE PEDALS

- + NEW HOLLOW FORGED SCANDIUM-CHROMOLY AXLES
- + NEW SILICON FRICTION SEAL SYSTEM
- + NEW FINISH LINE (TM) TEFLON BEARING LUBRICANT
- + NEW CNC LOGOS
- + IMPROVED PIN DESIGN AND CONFIGURATION
- + IN-HOUSE PRODUCTION = REDUCED PRICE!

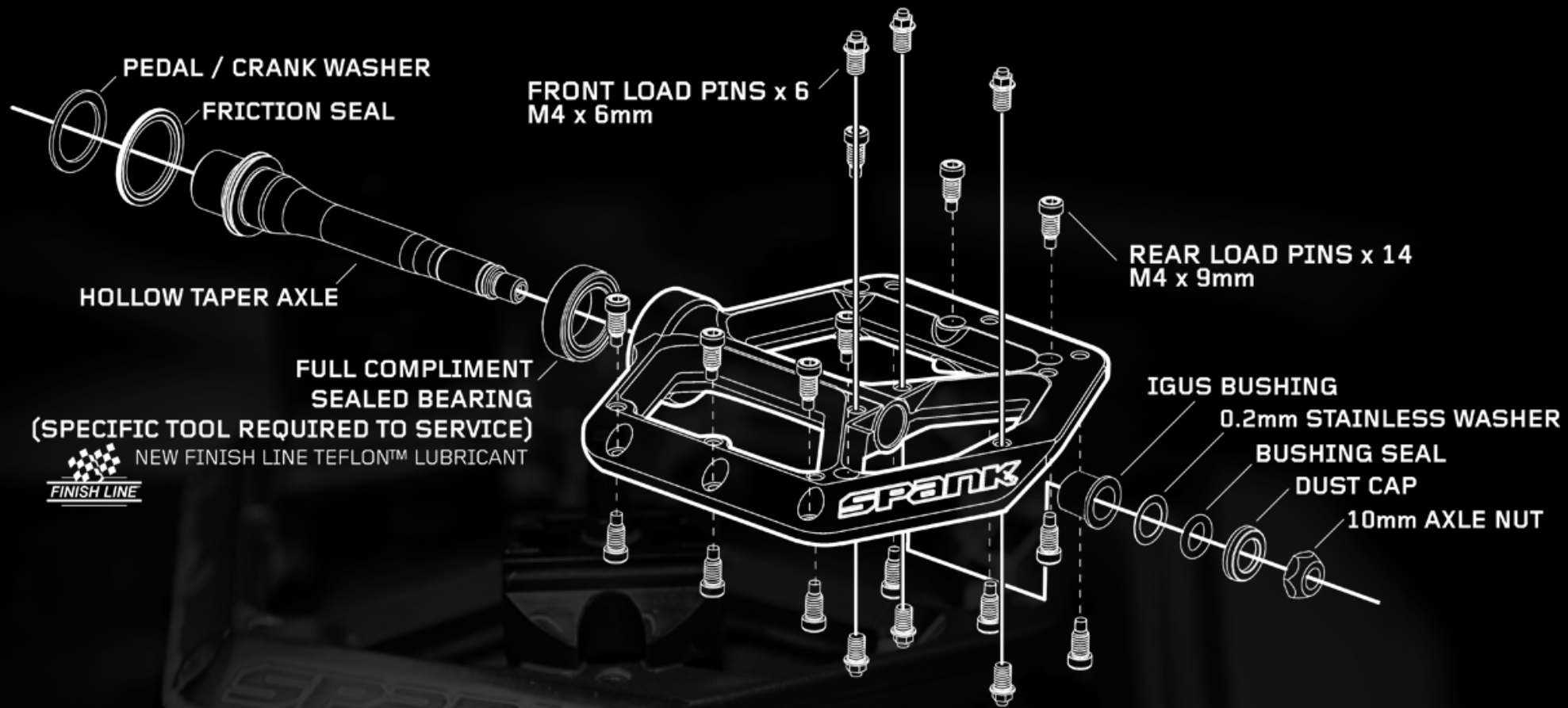


SPANK

SPANK

DESIGN • MANUFACTURE • RIDE

SPIKE PEDAL CONSTRUCTION



SPANK

SPANK

DESIGN • MANUFACTURE • RIDE

NEW SPOON PEDALS



- + 3 SIZES - THE PERFECT PEDAL FOR EVERY RIDER
- + THIN 14-12MM CONCAVE BODIES
- + SEALED INDUSTRIAL BEARING / IGUS BUSHING
- + EXTRUDED CNC OPTIMIZED PEDAL BODY
- + FORGED SCANDIUM-CHROMOLY AXLES

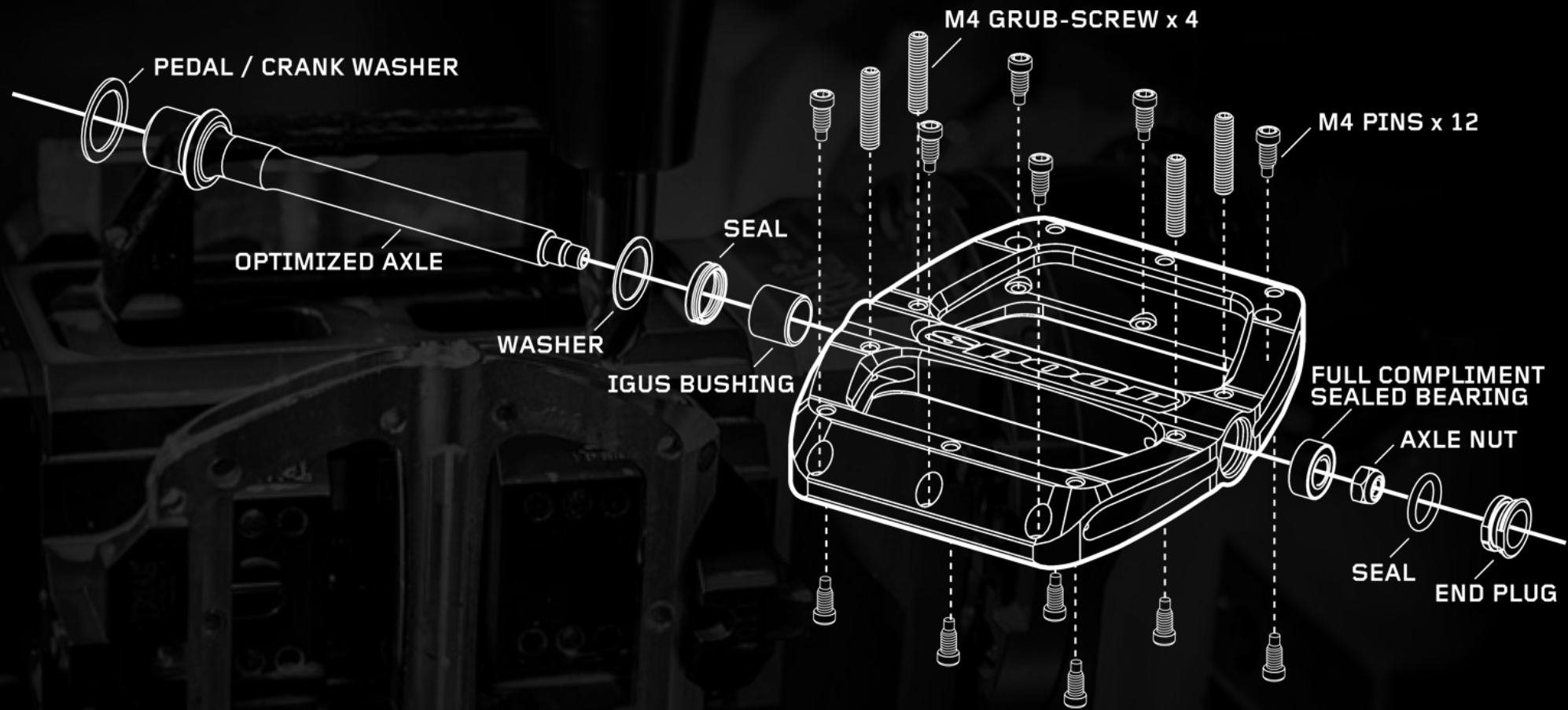


SPOON

SPANK

DESIGN • MANUFACTURE • RIDE

SPOON PEDAL CONSTRUCTION



spoon

SPANK

DESIGN • MANUFACTURE • RIDE



KIDS LINE



30



SIZE

S

≤ 39

US size 6 and under



RESEARCH WITH SPANK'S KIDS TEAM RIDERS AND PARENTS IDENTIFIED PROBLEM COMPONENTS THAT CHALLENGED CHILDREN'S PROGRESSION OR LEAD TO DANGEROUS SITUATIONS.

A NEW LINE OF SPOON KIDS COMPONENTS ANSWERS THESE ISSUES, AND PROVIDES THE FIRST SAFE, LIGHTWEIGHT, AND AFFORDABLE UPGRADE COMPONENTS DESIGNED FOR YOUNGER RIDERS.

SPANK

DESIGN • MANUFACTURE • RIDE

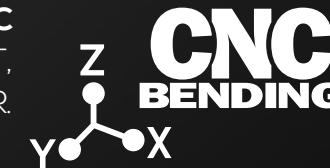


THE INDUSTRY'S FIRST LIGHT WEIGHT, AFFORDABLE, AND EFFECTIVE HIGH FREQUENCY VIBRATION DAMPING HANDLEBAR SYSTEM, NOW AVAILABLE IN OOZY TRAIL AND SPIKE DH MODELS.

- + IMPEDES SUSTAINED HIGH FREQUENCY VIBRATION, REDUCING HAND-ARM NUMBNESS AND ARM PUMP.
- + BY REINFORCING THE BAR INTERNALLY, FATIGUE LIFE, STIFFNESS, AND STRENGTH ARE HEIGHTENED.



IN CONJUNCTION WITH SPANK INDUSTRIES' TRADE MARK **DUAL XGT** AND **CNC BENDING** HANDLEBAR TECHNOLOGIES, VIBROCORE DELIVERS A LIGHTWEIGHT, HIGH PERFORMANCE, SAFE AND AFFORDABLE ALTERNATIVE TO CARBON FIBER.



DESIGN • MANUFACTURE • RIDE

WORLD CUP RACE TEAMS



UNITED RIDE TEAM

TRACEY & MICK HANNAH • ANDREW NEETHLING



COMMENCAL RIDING ADDICTION

RÉMI THIRION • GEORGE BRANNIGAN • MYRIAM NICOLE



RRP ROSE

DAVID TRUMMER • JANA BÁRTOVÁ



DESIGN • MANUFACTURE • RIDE



FREERIDE & TRAIL ADVENTURE PRO'S

THOMAS GENON • NICHOLI ROGATKIN
JAMES DOERFLING • GARRETT BUEHLER
ANTHONY MESSERE • DARREN BERRE CLOTH
MARK MATTHEWS • BRENDAN HOWEY

SPANK

DESIGN • MANUFACTURE • RIDE



KIDS TEAMS

HALAHAN BROTHERS

FINN FINESTONE

AIDEN GREANYA

LIL' SHREDDERS

SPANK

DESIGN • MANUFACTURE • RIDE

EVENTS

OFFICIAL CRANKWORX WHIP-OFF CHAMPIONSHIPS

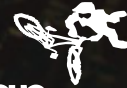
PRESENTED BY **SPANK**

CRANKWORX
ROTORUA 9-13 March 2016



Official Oceania
Whip-Off Championships

CRANKWORX
LES GETS 15-19 June 2016



Official European
Whip-Off Championships

CRANKWORX
WHISTLER 10-21 Aug 2016



Official World
Whip-Off Championships

SPANK

DESIGN • MANUFACTURE • RIDE

EVENTS

IXS DOWNHILL CUP

GERMAN • SWISS • LATIN AMERICA • EUROPEAN



SPANK

DESIGN • MANUFACTURE • RIDE



spank-ind.com



[spankbikes](https://www.facebook.com/spankbikes)



[spankbikes](https://www.instagram.com/spankbikes)



[spankbikes](https://twitter.com/spankbikes)

SPANK

DESIGN • MANUFACTURE • RIDE